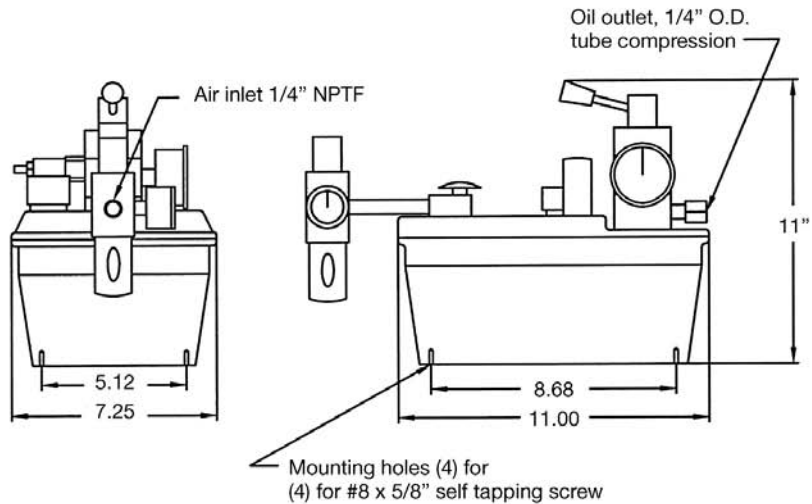


Air/Oil Power Unit

for use with ball type hydraulic rollblocks
max. operating pressure 1,450 psi



Application

The HCR-PA-31201 is an air driven hydraulic pump package. It is designed for intermittent use and the actuation of 550-1,450 psi die lifters.

Description

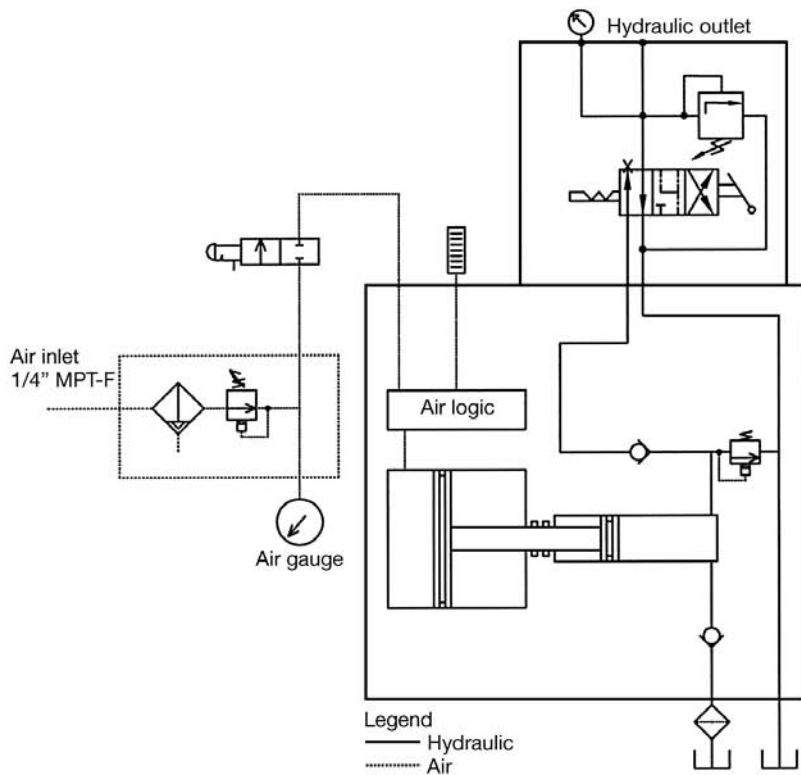
Hydraulic pressure is controlled by the adjustable air regulator. Circuit relief valve reduces possible pressure intensification caused by overloading the rollblocks.

Note

Air supplied to pump must be clean, dry and non-lubricated. Air filter with auto drain supplied with each unit.

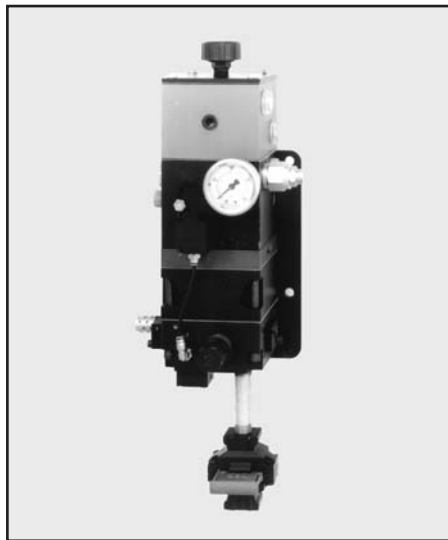
HCR-PA-31201

- Reservoir Capacity: 146 cu. in.
- Air/Oil Ratio: 60:1
- Liquid Filled Hydraulic Pressure Gauge
- Weight: 16 lbs.
- Hydraulic Pressure Relief Valve
- Output Pressure: 550-1,450 psi



Air/Oil Power Unit

for use with hydraulic rollblocks
max. operating pressure 1,450 psi



Application

The HCR-PA-22201 is an air driven hydraulic pump package. It is designed for intermittent use and the actuation of 550-1,450 psi die lifters.

Description

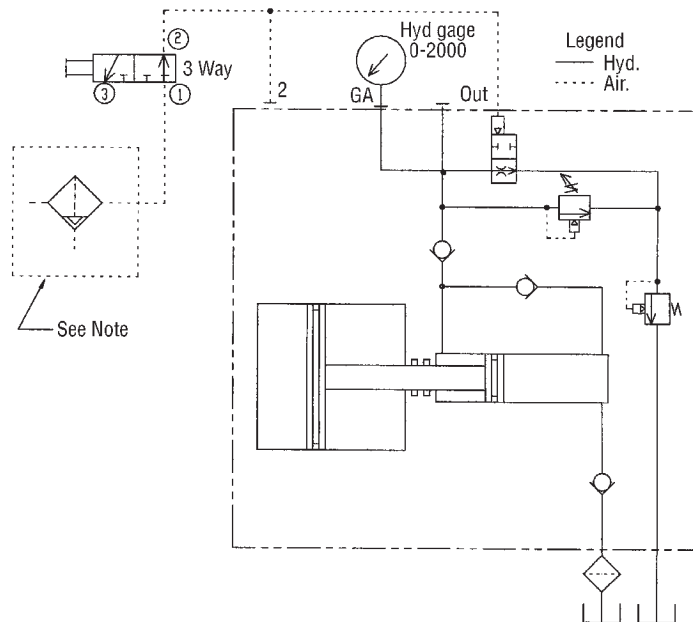
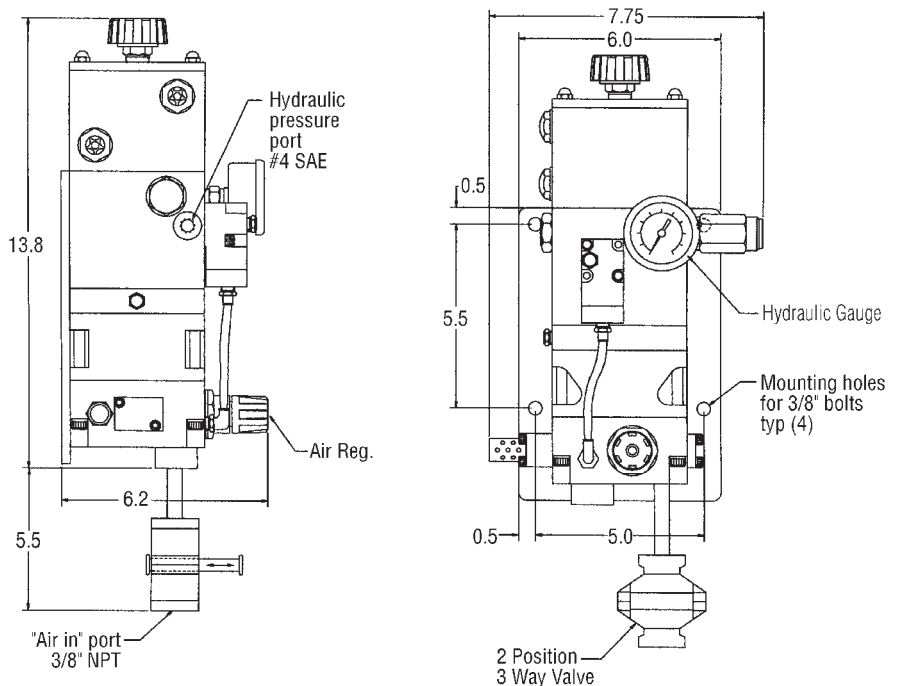
Hydraulic pressure is controlled by the adjustable air regulator. Circuit relief valve reduces possible pressure intensification caused by overloading the rollblocks. A return line check valve keeps rollers or balls not under the die, up during stamping.

Note

Minimum inlet air pressure is 60 psi. Air supplied to pump must be clean, dry and non-lubricated. Air filter with auto drain to be supplied by customer or option part no. HCR-HA-FD60-3.

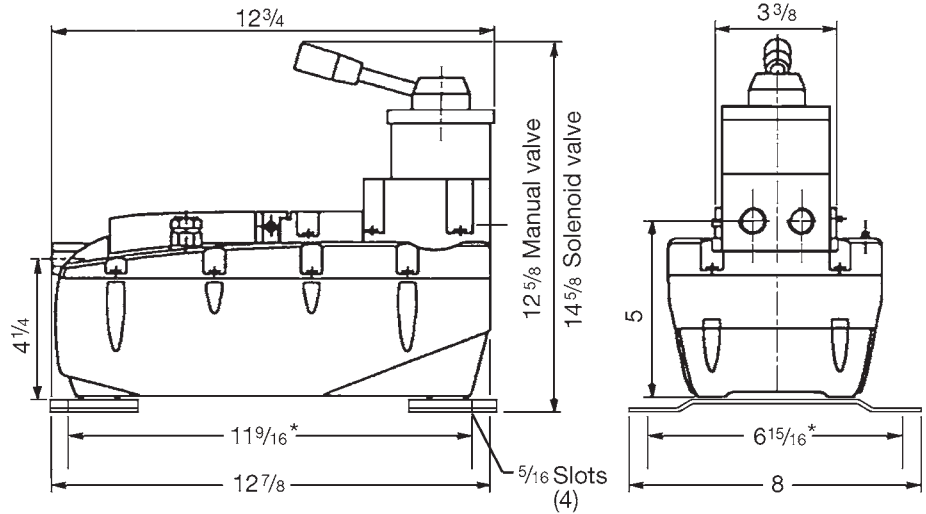
HCR-PA-22201

- Reservoir Capacity: 40 cu. in.
- Suction Strainer: **HCR-U.HE101** 25 Micron
- Air/Oil Ratio: 20:1
- Liquid Filled Hydraulic Pressure Gauge
- Weight: 20 lbs.
- Hydraulic Pressure Regulator/Relief Valve
- Output Pressure: 550-1,450 psi



Air/Oil Power Unit

max pressure 5,800 psi



* Bolt pattern for mounting screws

Application

This pump series is for small clamping and lifting circuits.

Description

The die lifter pumps include a circuit relief valve which eliminates pressure intensification by overloaded die lifters.

The clamp system pumps include pressure switches to monitor clamping circuits for machine safety.

Advantages

- compact design
- horizontal mounting

| | | |
|-----------------------|--------------|-------------|
| Operating pressure | psi | 3,000-5,800 |
| Inlet air pressure | psi | 60 |
| Flow rate | (cu in./min) | see graph |
| Usable fluid capacity | (cu in) | 125 |
| Connecting threads | | |
| • Oil ports | | G ¼ BSPP |
| • Air inlet | | ¼ NPT |
| Weight | (lbs) | 14 |

| PART NO. | APPLICATION | DIRECTIONAL VALVE | CIRCUIT RELIEF VALVE | PRESSURE SWITCH |
|--------------|---------------------------|----------------------------------|----------------------|-----------------|
| HCR-PA-41200 | Used with remote valves | None | None | None |
| HCR-PA-41201 | High pressure die lifters | 1 manual, 3 pos., 4 way | 1 | None |
| HCR-PA-41501 | High pressure die lifters | 1 110 VAC solenoid 2 pos., 3 way | 1 | None |

