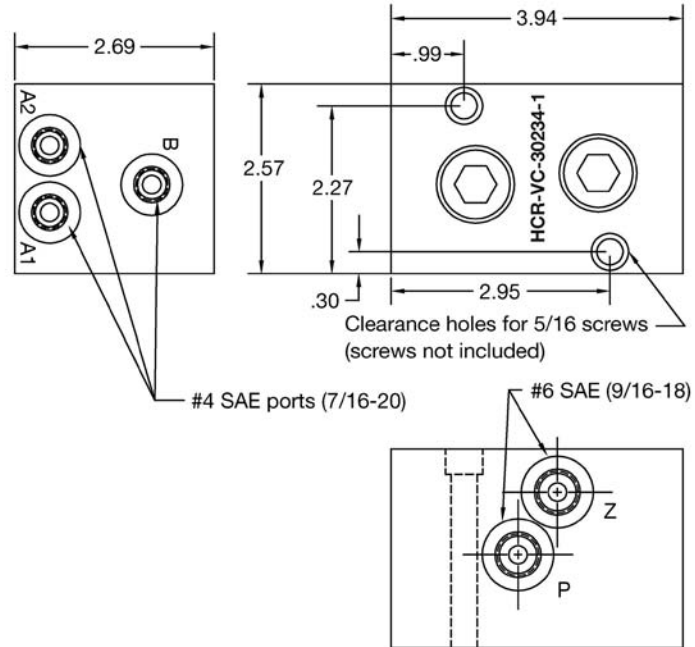


Connection Block

dual pilot operated check valves/dual safety circuits



Application

This connection block provides an important safety function for most press clamp circuits. It can be used with single- or double-acting clamps on the press bed or slide.

Description

The block splits incoming clamp line into two circuits. This provides dual safety protection for the bed or slide circuit by means of two pilot operated check valves.

If there is a pressure loss in one circuit (A1) the opposite clamps in circuit (A2) stay clamped.

The pressure loss, monitored by a pressure switch at the pump triggers the press E-stop circuit.

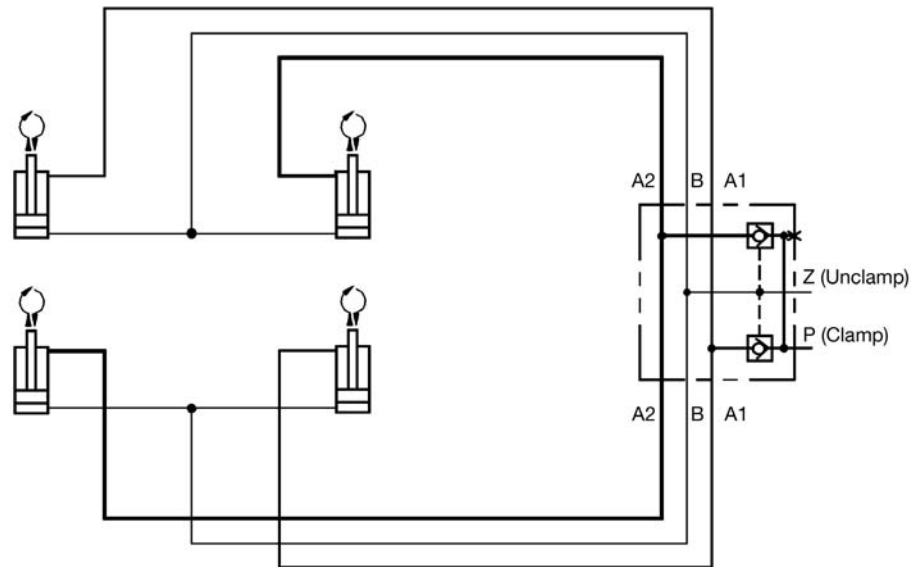
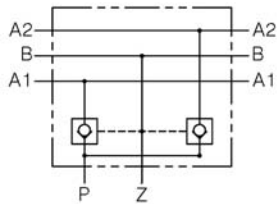
Advantages

- dual safety circuits
- zero leak check valves

Technical Data

Max. operating pressure	(psi)	5,800
Max. flow rate	(cu in/min)	900
Output ports	SAE (thread)	#4 (7/16-20)
Input ports	SAE (thread)	#6 (9/16-18)
Weight	(lbs)	7.5
Release pressure of check valves is 38% of clamp pressure		
Part no.	HCR-VC-30234-1	

Schematic symbol



Typical schematic application:

Bed die clamp circuit using four swing sink clamps.