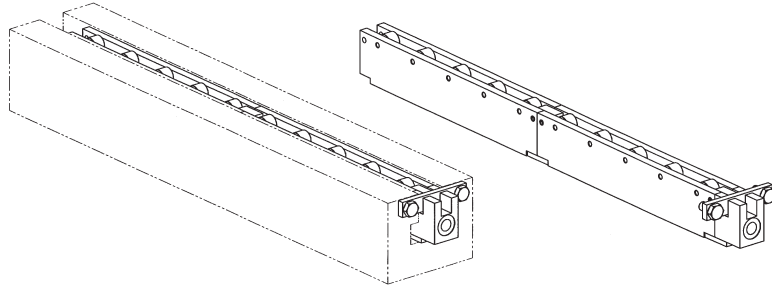
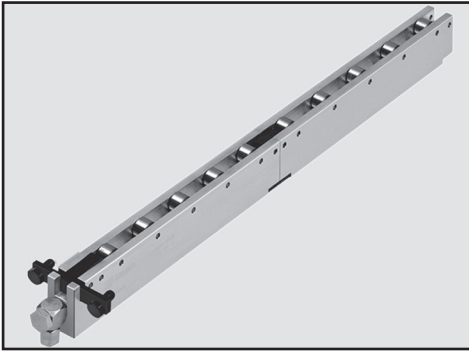


RH-Rollblocks – Rectangular Style

for ASA T-slots (3,000 psi)



Application

These rollblocks are used in pairs or sets to lift the die and provide a roller surface to easily roll the die in and out during the die change process. For use in ASA B5.1-1949 T-slots specifications or rectangular slots, see chart below for dimensions. Deeper T-slots can be shimmed to suit.

Description

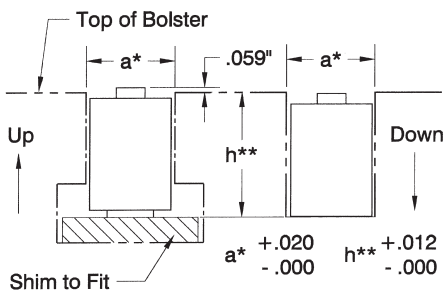
The RH rollblock consists of a bar with rollers, mounted in the upper channel. When pressurized the internal pistons push down against the bottom of the T-slot, lifting the roller assembly and the die. Recommended operating pressure is 3,000 psi. Pressure range is 1,000 to 5,800 psi maximum. A safety circuit relief set for 10% over the operating pressure, must be included to prevent pressure intensification caused by rollblock overload. See the pump SECTION I of this catalog for pumps or valve packages.

Advantages

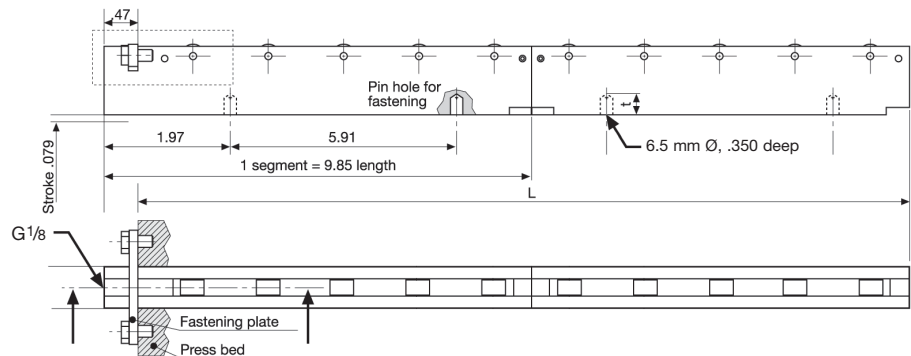
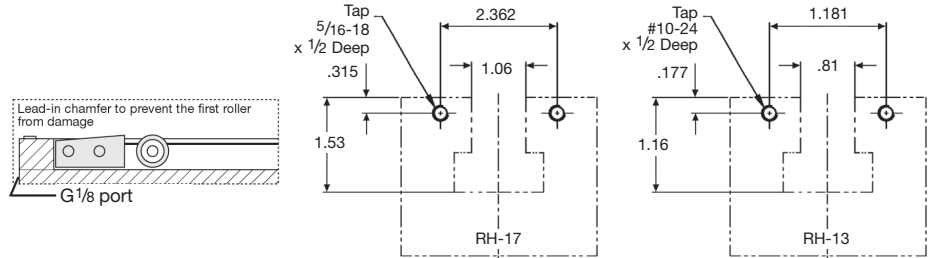
- modular design provides quick delivery
- each roller provides linear movement
- rolling resistance is 1-3% of the die weight
- each roller is a prelubricated cam roller bearing mounted in a common block
- rollblock can be secured with the included plate retainer or with pins mounted in the base of the T-slot

Rollblocks for 22, 28 and 36mm Metric T-slots sizes also available.

Slot Size		
	13/16	1 1/16
a	0.81	1.06
h	1.16	1.53



Subject to change without notice



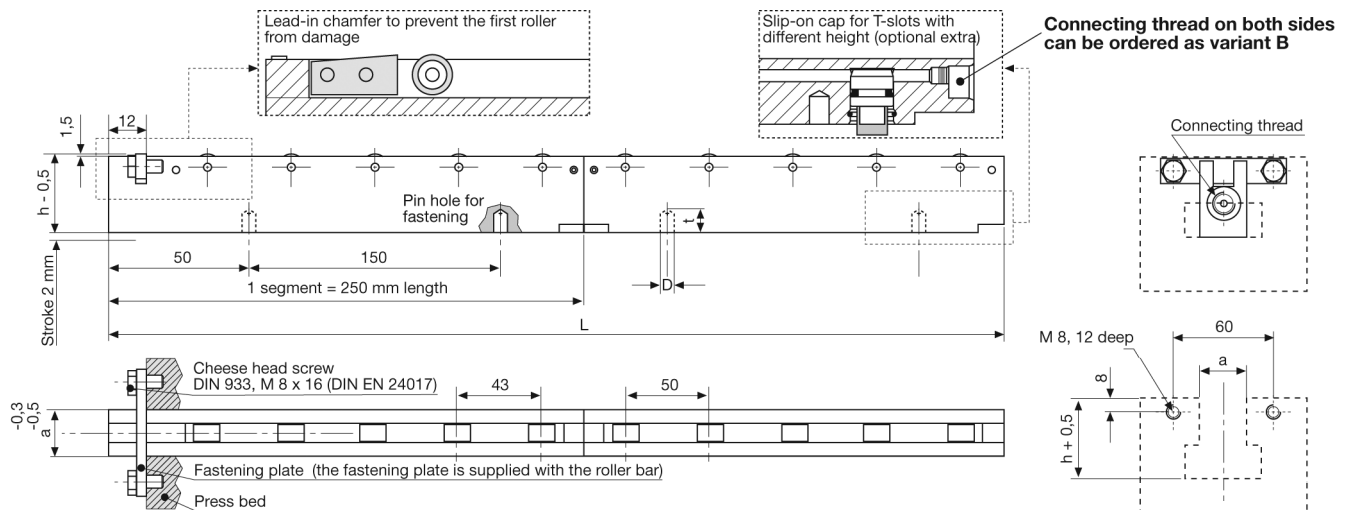
Part No.	T-slot size	L (in)*	Max Load per roller at 3,000 psi	Number of rollers	Max lift capacity at 3,000 psi
➔ HCR-RH-13-5	13/16"	9.38	220	8	1,760
➔ HCR-RH-13-10	13/16"	19.23	220	16	3,520
➔ HCR-RH-13-15	13/16"	29.08	220	24	5,280
➔ HCR-RH-13-20	13/16"	38.93	220	32	7,040
➔ HCR-RH-13-25	13/16"	48.78	220	40	8,800
➔ HCR-RH-17-5	1 1/16"	9.38	700	5	3,500
➔ HCR-RH-17-10	1 1/16"	19.23	700	10	7,000
➔ HCR-RH-17-15	1 1/16"	29.08	700	15	10,500
➔ HCR-RH-17-20	1 1/16"	38.93	700	20	14,000
➔ HCR-RH-17-25	1 1/16"	48.78	700	25	17,500
➔ HCR-RH-17-30	1 1/16"	58.63	700	30	21,000
➔ HCR-RH-17-35	1 1/16"	68.48	700	35	24,500
➔ HCR-RH-17-40	1 1/16"	78.33	700	40	28,000

➔ Stock Items

*Intermediate, Metric and Longer Lengths Available

RH-Roller Hydraulic Rollblocks

for **METRIC** T-slots



Slot (a)	Height (h) (mm)	Max. load/roller (kN)	Number of rollers per segment = 250 mm	Connecting thread	Max. operating pressure (bar)	Roller diameter (mm)	Stroke (mm)	D (mm)	t (mm)
22	38	6,0	5	G 1/8	400	16 x 12	2	6,5	9
28	48	6,4	5	G 1/8	400	16 x 12	2	8,5	12
36	61	8,0	5	G 1/4	400	19 x 12	2	8,5	12

Other heights and lengths are available on request. Max. temperature 100°C.

Part no.	Slot (a) (mm)	Length (L) (mm)	Max. load (kN)	Part no.	Slot (a) (mm)	Length (L) (mm)	Max. load (kN)
8.1834.5100L250	22	250	30	8.1834.6115L600	28	600	80
8.1834.5110L300	22	300	36	8.1834.6115L650	28	650	80
8.1834.5110L350	22	350	42	8.1834.6115L700	28	700	88
8.1834.5110L400	22	400	48	8.1834.6115L750	28	750	96
8.1834.5110L450	22	450	54	8.1834.6120L800	28	800	104
8.1834.5110L500	22	500	60	8.1834.6120L850	28	850	112
8.1834.5115L550	22	550	66	8.1834.6120L900	28	900	112
8.1834.5115L600	22	600	72	8.1834.6120L1000	28	1000	128
8.1834.5115L650	22	650	78	8.1834.6130L1100	28	1100	144
8.1834.5115L700	22	700	84	8.1834.6130L1250	28	1250	160
8.1834.5115L750	22	750	90	8.1834.6140L1350	28	1350	176
8.1834.5120L800	22	800	96	8.1834.6140L1500	28	1500	192
8.1834.5120L850	22	850	102	8.1834.6150L1750	28	1750	220
8.1834.5120L900	22	900	108	8.1834.6160L2000	28	2000	250
8.1834.5120L1000	22	1000	120				
8.1834.5130L1100	22	1100	132				
8.1834.5130L1250	22	1250	150				
8.1834.5140L1350	22	1350	162				
8.1834.5140L1500	22	1500	180				
8.1834.5150L1750	22	1750	210				
8.1834.5160L2000	22	2000	240				
Part no.	Slot (a) (mm)	Length (L) (mm)	Max. load (kN)	Part no.	Slot (a) (mm)	Length (L) (mm)	Max. load (kN)
8.1834.6100L250	28	250	32	8.1834.7110L500	36	500	80
8.1834.6110L300	28	300	40	8.1834.7115L600	36	600	96
8.1834.6110L350	28	350	48	8.1834.7115L750	36	750	120
8.1834.6110L400	28	400	48	8.1834.7120L850	36	850	136
8.1834.6110L450	28	450	56	8.1834.7120L900	36	900	144
8.1834.6110L500	28	500	64	8.1834.7120L1000	36	1000	160
8.1834.6115L550	28	550	72	8.1834.7130L1100	36	1100	176
				8.1834.7130L1250	36	1250	200
				8.1834.7140L1350	36	1350	216
				8.1834.7140L1500	36	1500	240
				8.1834.7150L1750	36	1750	280
				8.1834.7160L2000	36	2000	320